



**Insulation**Solutions®

# QUIP™

## Installation Instructions

### Tip #1: Installing the Quip

Install the Quip using a two-step process:

1. Slide Quip underneath mesh and "seat" mesh into the bottom of the Quip. **\*Note** Light gauge mesh required.
2. Snap the tubing down into the Quip. The easiest way to do this is by applying pressure to the bottom of the Quip with two fingers while pressing the tube down with your thumb (See Picture #1).



**Picture #1**

When installed correctly, there should be a slight separation between the mesh and the tubing (See Picture #2).



**Picture #2**



# QUIP™

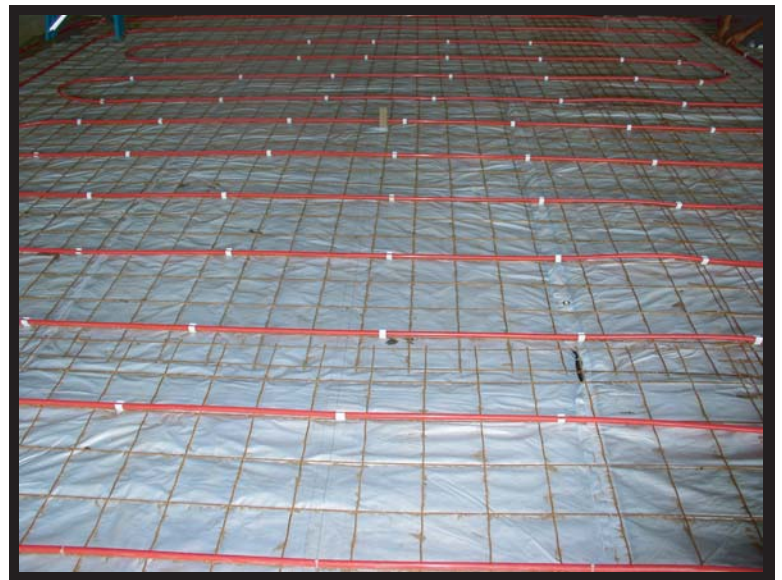
## Installation Instructions

### Tip #2: Quip Placement

The closer the placement, the stronger the hold (See Picture #3).

In order to insure that the tubing will stay secured to the wire mesh during a pour, it is recommended that Quips be spaced two feet apart. When you are calculating how many Quips you will need for a job, take the number of feet of tubing and divide it by two.

Make sure to plan on using more Quips if extra strength is needed in certain areas of the layout.



**Picture #3**

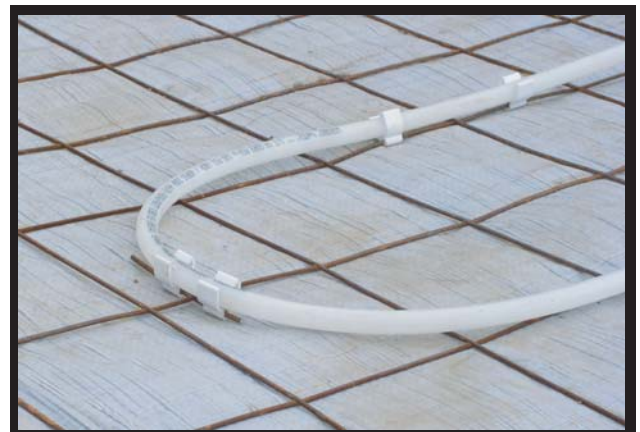


### Tip #3: Loops/Bends

There are several different ways to install Quips on a loop. The way you use them will depend on the layout of your tubing. Here are a few ways Quips have been used in the past.

#### Tight Loops:

This installer used two Quips and a cut piece of wire mesh to secure the peak of a tight loop (See Picture #4).



**Picture #4**



# QUIP<sup>™</sup>

## Installation Instructions

### Wider Loops:

When the Pex spacing is wider, one Quip at the peak of the loop will sufficiently secure the tubing (See Picture #5).



**Picture #5**

### 90 Degree Bends:

By using a few closely spaced Quips, Pex can be secured on a ninety degree bend (See Picture #6).



**Picture #6**