

SPECIFICATION INFORMATION



House Wrap Division: 7

Revision #1

1.0 Product Name

Wraptor Plus™
Reflective House Wrap.

2.0 Manufacturer



Insulation Solutions®

Insulation Solutions Inc.
401 Truck Haven Road.
East Peoria, IL 61611

Engineering Assistance
Toll Free: 866-698-6562
Fax: 309-698-0065

www.insulationsolutions.com

3.0 Product Description

3.1 Basic Use:

Wraptor Plus™ is a premium cross-woven house wrap designed to protect exterior wall systems from bulk moisture infiltration.

Wraptor Plus™ also helps increase energy efficiency by reducing the amount of radiant heat and pressure driven air that passes through the building envelope.

Wraptor Plus™ is breathable and extremely tear resistant .

3.2 Composition & Materials:

Wraptor Plus™ is a microperforated, cross-woven polyethylene membrane with an aluminized reflective layer.

3.3 Size:

Wraptor Plus™ is available in several roll sizes : 2' x 250' , 4'x250' , 9' x 150' , 10' x 100'.

3.4 Weight:

Wraptor Plus™ weighs approximately 26 lbs. per 1000 sq. ft.

4.0 Technical Data

4.1 Applicable Standards

- **TAPPI T-460** Air Resistance of Paper
- **TAPPI T-410** Basis Weight
- **ASTM E 1677** Standard Specification for and Air Retarder (AR) Material or System for Low-Rise Framed Building Walls

- **ASTM E 96** Standard Test Method for Water Vapor Transmission of Materials
- **ASTM D 882** Standard Test Method for Tensile Properties of Thin Plastic Sheeting
- **ASTM D 1117** Standard Guide for Evaluating Nonwoven Fabrics
- **ASTM D 751** Standard Test Methods for Coated Fabrics
- **ASTM E 84** Standard Test Method for Surface Burning Characteristics of Building Materials
- **ASTM C 1371** Standard Test for Determination of Emittance of Materials Near Room Temperature Using Portable Emisometers
- **AATCC 127** Water Penetration Resistance

Note: To the best of our knowledge, these are typical property values and are intended as guides only, not as specification limits. Insulation Solutions Inc.® makes no warranties as to the fitness for a specific use or merchantability of products referred to, no guarantee of satisfactory results from reliance upon contained information or recommendations and disclaims all liability for resulting loss or damage.

PROPERTIES	TEST METHOD	WRAPTOR PLUS™
Thickness, Nominal		.004 in. (nominal)
Weight Per MSF		26 lbs.
Air Permeability	TAPPI T-460	191.6 cfm/ft ²
Water Penetration Resistance	AATCC 127	>116.8 cm of H ₂ O
Water Vapor Transmission	ASTM E 96	7 perms
Tear Resistance	ASTM D 1117	67.1 lbs. (MD) 91.2 lbf./in. (CD)
Breaking Strength	ASTM D 882	27.2 lbf./in. (MD) 69.8 lbf./in. (CD)
Bursting Strength	ASTM D 751	96 PSI
Emissivity	ASTM C 1371	.06 - .07
Maximum Use Temperature		220° F
Minimum Use Temperature		-40° F
Surface Burning Characteristics	ASTM E 84-03	15 FSI (Class A) 40 SDI (Class A)

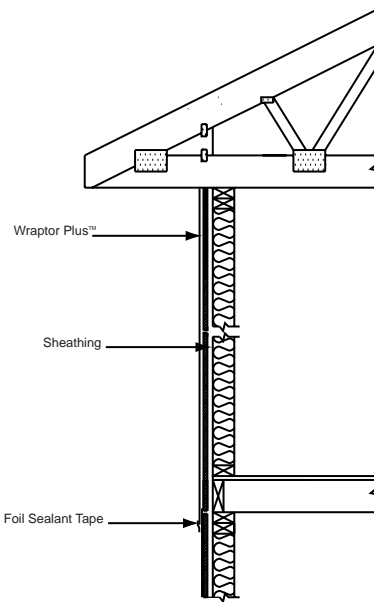
4.2 Environmental Considerations:

Wraptor Plus™ can be used as a radiant barrier when installed with the foil side facing an air space.

5.0 Installation

WRAPTOR PLUS™ PLACEMENT

- 5.1 Align bottom edge of roll to the bottom portion of the wall and unroll against the wall sheathing.
- 5.2 Fasten with plastic cap nails, staples or large head nails. When installing over foam sheathing, fasteners should penetrate structural framing at least 1/2".
- 5.3 Overlap all vertical seams a minimum of 6". Horizontal seams should be overlapped a minimum of 8".
- 5.4 All seams, tears and protrusions should be taped with **Wraptor™** House Wrap Tape.
- 5.5 For window and door details refer to the Wraptor Plus™ Installation Guide available from the manufacturer.



PROTECTION

- 5.5 Wraptor Plus™ should be covered with the exterior cladding as soon as it is practical (maximum 180 days).
- 5.6 When using Wraptor Plus™ behind stucco, a lathe system should be employed. In moist or humid areas, check local codes for proper moisture control practices. Some areas may require two layers of house wrap and/or an additional drainage plane behind stucco finishes.
- 5.7 Back-priming of wood or other porous siding is recommended before installing over house wrap.

(These are very general installation instructions. The Wraptor Plus™ Installation Guide contains more detailed instructions and is available from the manufacturer. Instructions on architectural or structural drawings should be reviewed and followed as well.)

6.0 Availability & Cost

Wraptor Plus™ is sold through construction supply houses and lumberyards across the United States.

Wraptor Plus™ current cost information can be obtained by calling our corporate sales office at 866-698-6562.

7.0 Warranty

To the best of our knowledge, the specification chart on page one lists typical property values and are intended as guides only, not as specification limits. INSULATION SOLUTIONS INC. MAKES NO WARRANTIES AS TO THE FITNESS FOR A SPECIFIC USE OR MERCHANTABILITY OF PRODUCTS REFERRED TO, NO GUARANTEE OF SATISFACTORY RESULTS FROM RELIANCE UPON CONTAINED INFORMATION OR RECOMMENDATIONS AND DISCLAIMS ALL LIABILITY FOR RESULTING LOSS OR DAMAGE.

8.0 Maintenance

Wraptor Plus™ requires no maintenance once installed.

9.0 Technical Services

Technical information and detailed test results can be obtained by calling our corporate office at 866-698-6562.

10.0 Filing Systems

Additional information is available from the manufacturer.